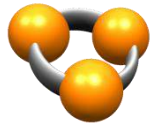
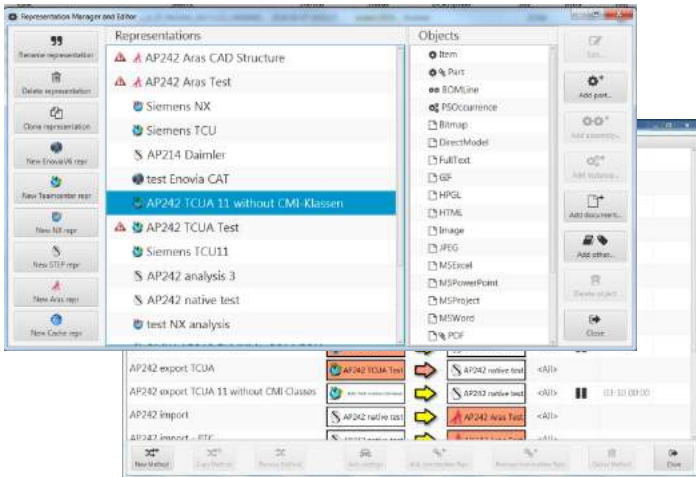


COMPDM.

PDM DATA EXCHANGE AS A PUSH-BUTTON PROCEDURE



Product structures are defined in a multitude of formats, PLM-based formats, CAD-based formats or neutral formats. Data exchange becomes a mess, especially for suppliers working for many OEM's. **COMPDM** makes it easy to manage these multiple formats when sending or receiving data from a partner.

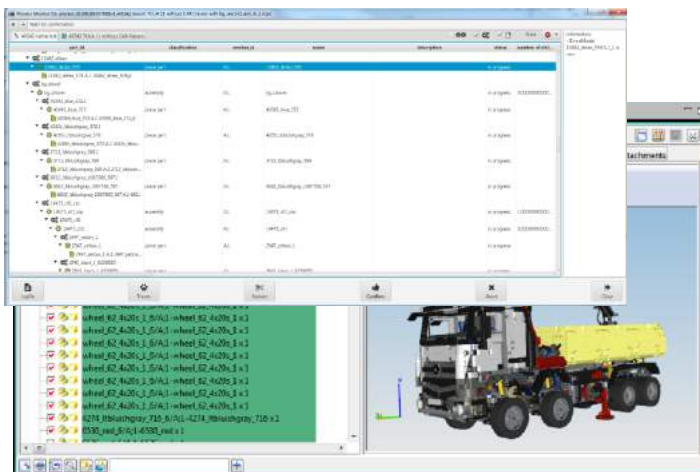


DATA MAPPING AND ADAPTATION TO BUSINESS REQUIREMENTS.

COMPDM supports you in your PDM data exchange task by making it very easy to export or import data from/to your PLM or CAD systems and convert it into the desired target formats (either direct conversion or using neutral formats like STEP AP214 and STEP AP242XML)

COMPDM has a modern graphical user interface that allows you to define even highly complex data mapping processes **on your own** in a very easy and straightforward manner.

When defining new exchange methods, **COMPDM** can automatically analyze your source data model and suggests an initial set of relevant objects, data mapping, and business rules → you don't start from scratch and can handle as many data models and mappings in parallel as you need.



RECONCILIATION ON IMPORT.

Before importing unknown data into your PLM, **COMPDM** compares it to the data already in your system. Differences are displayed and can be treated individually by the user. No valuable data will be accidentally overwritten.

SEAMLESS PHYSICAL DATA EXCHANGE.

COMPDM has an interface to the data exchange manager TRUfusion Enterprise® (by Rocket Software). With this, data packages can directly be sent to a partner without additional manual steps, saving up to 90% of the effort.

When receiving those packages, they can be imported directly into your PLM system following precisely the business rules you have defined.

Data import or export can be started both from the command line and from the graphical user interface.

Supports Siemens Teamcenter Supplier Package for data exchange with Daimler.

Supports STEP AP214 PDM data exchange format as defined at Daimler and at Airbus for their suppliers.

AVAILABILITY.

The *Standard Edition* of **COMPDM** already contains

- One CAD module (CATIA V5 or NX)
- One PLM module (Teamcenter UA, Aras Innovator, 3DEXPERIENCE, Enovia VPM V4, Windchill)
- STEP module (AP 214 and AP 242 XML)
- Definition of specific methods and processes based on customer data models
- Business Development Kit provides the functionality to embed and maintain individual JAVA code for the management of complex, individual business rules.

Scheduled for upcoming releases: CreO module

COMPDM won the AFNet & ProSTEP iViP AP242 PDM Benchmark (2017) and is productive at a number of automotive and aerospace companies.

PARTNER CONTACT @ CARDS PLM SOLUTIONS

Phone: +31 499 371990

E-mail: info@cardsplmsolutions.com

Internet: <http://plm.t-systems-service.com/en/compdm>



in partnership with

